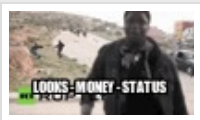




Advertise here

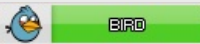
Profile Types - Full Ante Face

Thread Modes



heilsa

Mega Super Poster



Posts: 3,004  
Threads: 98  
Joined: Jun 2015  
Reputation: 20

06-30-2015, 09:13 PM (This post was last modified: 07-19-2015, 02:23 PM by heilsa.)

#1

Quote:

(Full) Ante-face: Middle and lower face that protrudes forward to a great extent (e. g. Angelina Jolie), corresponding to our ideal of absolute beauty.

<http://www.sailerclinic.com/en/fachwoert...chnis.html>



(full ante face on the left)



(Overview about the different profile types)

The term ante face was coined by the surgeon Prof. Sailer who also offers procedures to achieve an full ante face (maxillomandibular advancement). While its indisputable that an full ante face looks better from the

profile view its still controversial whether it makes a real difference from the front view.

Any kind of retro face looks aesthetical unappealing both from the front view and from the profile view.

In order to see how whether you got a full ante face its necessary to take a profile shot in natural head position. if your Middle and lower face is beyond the so called Gonzalez-Ulloa line youve got an full anteface.

(Gonzalez-Ulloa line =vertical line dropped from soft tissue nasion, perpendicular to the Frankfort horizontal plane)

(Frankfort horizontal plane is defined clinically as a line connecting the tragion (the notch in the superior margin of each tragus) and orbitale (the lowest palpable point on the inferior orbital rim))

[attachment=11]

There are ethnic differences. Most caucasian people dont have an full ante face. it is more common under black and asian people.

Find

Reply



**JustLolAtYourMaxilla**

Member



Posts: 222  
Threads: 13  
Joined: Jun 2015  
Reputation: **20**

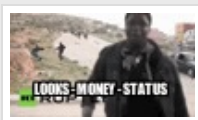
Find

06-30-2015, 09:20 PM

#2

Does this mean that neanderthals are chad slayers?

Reply



**heilsa**

Mega Super Poster



Posts: 3,004  
Threads: 98  
Joined: Jun 2015  
Reputation: **20**

06-30-2015, 09:45 PM

#3

**ManletInDisguise Wrote:** →

(06-30-2015, 09:16 PM)

Is not an anteface, she's tilting her head back giving the illusion it is.

**JustLolAtYourMaxilla Wrote:** →

(06-30-2015, 09:20 PM)

Does this mean that neanderthals are chad slayers?

**Polysynthetic Sumatran Orangutan Wrote:** →

(06-30-2015, 09:22 PM)

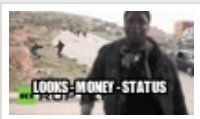
Ante-face is overrated in my opinion, in some it can look great, but it's not a prerequisite.

Anyway, here are the profiles of Emilia Clarke, Scarlett Johansson, Brooke Shields & Angelina Jolie. Some of the most beautiful Women in the world.



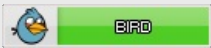


clark has an full anteface. her maxilla and mandibular are beyond the Gonzalez-Ulloa line.



**heilsa**

Mega Super Poster



Posts: 3,004  
Threads: 98  
Joined: Jun 2015  
Reputation: **20**

08-04-2015, 01:00 PM (This post was last modified: 08-04-2015, 01:02 PM by heilsa.)

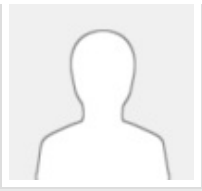
#4

**Quote:**

*This is the story of a man who falls from a 50-storey apartment block. As he falls, he repeats over and over to reassure himself: "So far so good, so far so good, so far so good." But it's not the fall that's important - it's the landing.*







**chinless**  
Member



Posts: 70  
Threads: 8  
Joined: Jul 2015  
Reputation: 0

**Lunchables Wrote:** →

(08-10-2015, 06:09 AM)



My profile looks like the woman on the left. Isn't she lifting her face up though?

Yeah, she's tilting her head up, and it's not a true profile shot.

Find

Reply

**allindaeyes**  
Banned

Posts: 2,245  
Threads: 159  
Joined: Jun 2015

Find

Is anteface good on non dom/low class caucasian men?  
@Helisa

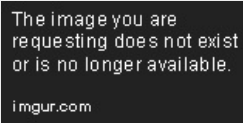
Reply

**david\_chicago**  
Unregistered

**dontbelonghere Wrote:** →

(08-10-2015, 06:06 AM)

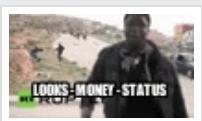
Do I have an anteface?



I always wanted a bigger, more projected forehead because it's a neotenous/pedomorphic feature. Could I be wrong about that being attractive?

LOL

Reply



**heilsa**  
Mega Super Poster

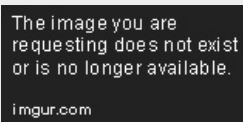


Posts: 3,004  
Threads: 98

**dontbelonghere Wrote:** →

(08-10-2015, 06:06 AM)

Do I have an anteface?



I always wanted a bigger, more projected forehead because it's a neotenus/pedomorphic feature. Could I be wrong about that being attractive?

yeah im not falling for that.

anyway that girl you posted has an anteface. i dont know whethter a projecting forehead is an attractive feature. her mandibular or chin is retruded.

**Quote:**

*This is the story of a man who falls from a 50-storey apartment block. As he falls, he repeats over and over to reassure himself: "So far so good, so far so good, so far so good." But it's not the fall that's important - it's the landing.*



Find

Reply

**david\_chicago**  
Unregistered

08-10-2015, 08:03 PM

#9

**dontbelonghere Wrote:** →

(08-10-2015, 07:45 PM)

**heilsa Wrote:** →

(08-10-2015, 07:29 PM)

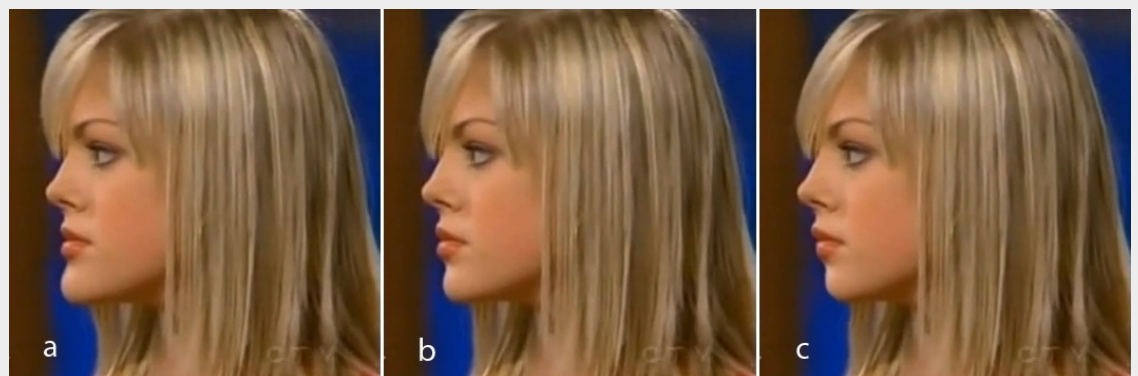
yeah im not falling for that.

anyway that girl you posted has an anteface. i dont know whethter a projecting forehead is an attractive feature. her mandibular or chin is retruded.

Well it is me, but I guess whether or not you believe me is not that important. Anyway, youre right that my chin is retruded, but I actually think that is a good feature on women. Do you think it is a flaw? Not arguing, just genuinely curious.

I posted this morph on another forum a few years ago and asked which one is most attractive. The votes were almost unanimously for the retruded chin (picture C), which is probably not anteface. So i'm not sure about this theory.

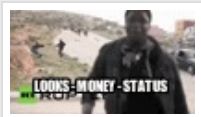
B is the girl's original face, which is really nicely proportional but maybe not as feminine.



It's not u, u faggot.

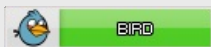
08-10-2015, 08:36 PM

#10



heilsa

Mega Super Poster



Posts: 3,004  
Threads: 98  
Joined: Jun 2015  
Reputation: 20

i have to correct myself. this probably not an anteface. the pic isnt taken in a natural head positon  
<https://lookism.net/showthread.php?tid=2838>

Quote:

*This is the story of a man who falls from a 50-storey apartment block. As he falls, he repeats over and over to reassure himself: "So far so good, so far so good, so far so good." But it's not the fall that's important - it's the landing.*

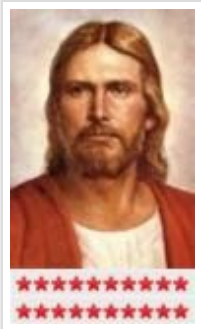


Find

Reply

08-11-2015, 10:58 PM (This post was last modified: 08-11-2015, 10:58 PM by Jesus Christ.)

#11



Jesus Christ

Super Poster

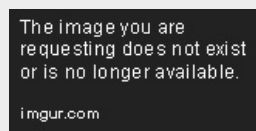


Posts: 1,354  
Threads: 152  
Joined: Aug 2015  
Reputation: 0

dontbelonghere Wrote: →

(08-10-2015, 06:06 AM)

Do I have an anteface?



I always wanted a bigger, more projected forehead because it's a neotenous/pedomorphic feature. Could I be wrong about that being attractive?

Tlting the head too much forward.





**Franktank**  
Super Poster



Posts: 1,825  
Threads: 61  
Joined: Jun 2015  
Reputation: **20**

08-12-2015, 03:29 AM

#12

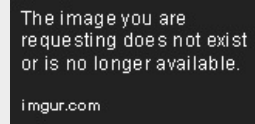
heilsa Wrote: →

(08-10-2015, 07:29 PM)

dontbelonghere Wrote: →

(08-10-2015, 06:06 AM)

Do I have an anteface?



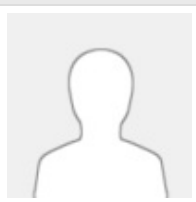
I always wanted a bigger, more projected forehead because it's a neotenous/pedomorphic feature. Could I be wrong about that being attractive?

yeah im not falling for that.

anyway that girl you posted has an anteface. i dont know whethter a projecting forehead is an attractive feature. her mandibular or chin is retruded.

Retroagthic profiles are ideal for women

The sub-8 law refers to systematic legal oppression of non-attractive men (more specifically, men rated below 8 in attractiveness).



**cr7**  
Newbie

Posts: 10  
Threads: 0  
Joined: Aug 2015  
Reputation: **0**

08-14-2015, 01:56 PM

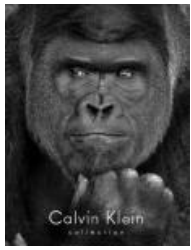
#13

all about the face

09-05-2015, 06:27 PM

#14





**Sociopath1983**

Super Poster



Posts: 1,494  
Threads: 7  
Joined: Jun 2015  
Reputation: **111**

Find

**Franktank Wrote:** →

(08-12-2015, 03:29 AM)

**heilsa Wrote:** →

(08-10-2015, 07:29 PM)

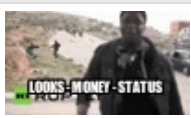
yeah im not falling for that.

anyway that girl you posted has an anteface. i dont know whethter a projecting forehead is an attractive feature. her mandibular or chin is retruded.

Retroagthc profiles are ideal for women

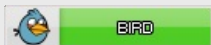
According to science retro profiles are always inferior. Ideally the maxilla and mandible should be about 1cm in front of the forehead. A mild ante face is ideal on everyone male or female. It's the ideal profile.

Reply



**heilsa**

Mega Super Poster



Posts: 3,004  
Threads: 98  
Joined: Jun 2015  
Reputation: **20**

Find

10-08-2015, 01:01 PM

#15

**Manuel Wrote:** →

(10-08-2015, 11:19 AM)

I never know how to judge if I have one, I don't know how to angle my head.

Natural head position

**Quote:**

*This is the story of a man who falls from a 50-storey apartment block. As he falls, he repeats over and over to reassure himself: "So far so good, so far so good, so far so good." But it's not the fall that's important - it's the landing.*



Reply



**Iltvyr**

Mega Super Poster



Posts: 2,218  
Threads: 367  
Joined: Jul 2015  
Reputation: **459**

Find

10-08-2015, 08:21 PM

#16

**Sociopath1983 Wrote:** →

(09-05-2015, 06:27 PM)

**Franktank Wrote:** →

(08-12-2015, 03:29 AM)

Retroagthc profiles are ideal for women

According to science retro profiles are always inferior. Ideally the maxilla and mandible should be about 1cm in front of the forehead. A mild ante face is ideal on everyone male or female. It's the ideal profile.

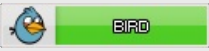
Show me a maxilla that's 1 cm anterior than the supraorbital ridge please. Upper lip only maybe and of course nose, but those things aren't maxilla.

Reply

Move this into the lookmaxing/aesthetic section tbh @elm



Paulus Monster Poster



Posts: 8,574  
Threads: 324  
Joined: Dec 2015  
Reputation: 3,813

1 Head breadth. The maximum breadth of the head, usually above and behind the ears.

2 Interorbital breadth. The distance between the centers of the pupils of the eyes (the eyes are looking straight ahead).

3 Face breadth (biacromial). The breadth of the face, measured across the most lateral projections of the cheek bones (zygomatic arches).

4 Face length (menton-sellion). The vertical distance from the tip of the chin (menton) to the deepest point of the nasal root depression between the eyes (sellion).

5 Bicular breadth. The distance from the outer corners of the eyes (right and left external).

6 Binasal breadth. The breadth of the head from the right nostril to the left. (Tip of the nasolabial notch at the front of the nose).

7 Glabella to back of head. The horizontal distance from the most anterior point of the forehead between the eyebrows (glabella) to the back of the head, measured with a headboard.

8 Menton to back of head. The horizontal distance from the tip of the chin (menton) to the back of the head, measured with a headboard.

9 Sellion to top of head. The vertical distance from the nasal root depression between the eyes (sellion) to the level of the top of the head, measured with a headboard.

10 Stenoion to top of head. The vertical distance from the midpoint of the lip (stenoion) to the level of the top of the head, measured with a headboard.

11 Stenoion to back of head. The horizontal distance from the nasal root depression between the eyes (sellion) to the back of the head, measured with a headboard.

12 Pronoion to back of head. The horizontal distance from the tip of the nose (pronoion) to the back of the head, measured with a headboard.

13 Head length. The maximum length of the head, measured from the most anterior point of the forehead between the eyebrows (glabella) to the back of the head (occiput).

14 Menton to tip of head. The vertical distance from the tip of the chin (menton) to the level of the top of the head, measured with a headboard.

15 Menton-criton length. The vertical distance from the bottom of the chin (menton) to the midpoint of the nostril (criton).

16 Menton-subnasale length. The distance from the bottom of the chin (menton) to the base of the most superior (subnasale).

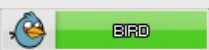
The bigger the head, the bigger the star...[http://youtu.be/qnu\\_bkvumxU](http://youtu.be/qnu_bkvumxU)



<http://lookism.net/Thread-What-type-of-p...o-you-have>



Paulus Monster Poster



Posts: 8,574  
Threads: 324  
Joined: Dec 2015  
Reputation: 3,813

1 Head breadth. The maximum breadth of the head, usually above and behind the ears.

2 Interorbital breadth. The distance between the centers of the pupils of the eyes (the eyes are looking straight ahead).

3 Face breadth (biacromial). The breadth of the face, measured across the most lateral projections of the cheek bones (zygomatic arches).

4 Face length (menton-sellion). The vertical distance from the tip of the chin (menton) to the deepest point of the nasal root depression between the eyes (sellion).

5 Bicular breadth. The distance from the outer corners of the eyes (right and left external).

6 Binasal breadth. The breadth of the head from the right nostril to the left. (Tip of the nasolabial notch at the front of the nose).

7 Glabella to back of head. The horizontal distance from the most anterior point of the forehead between the eyebrows (glabella) to the back of the head, measured with a headboard.

8 Menton to back of head. The horizontal distance from the tip of the chin (menton) to the back of the head, measured with a headboard.

9 Sellion to top of head. The vertical distance from the nasal root depression between the eyes (sellion) to the level of the top of the head, measured with a headboard.

10 Stenoion to top of head. The vertical distance from the midpoint of the lip (stenoion) to the level of the top of the head, measured with a headboard.

11 Stenoion to back of head. The horizontal distance from the nasal root depression between the eyes (sellion) to the back of the head, measured with a headboard.

12 Pronoion to back of head. The horizontal distance from the tip of the nose (pronoion) to the back of the head, measured with a headboard.

13 Head length. The maximum length of the head, measured from the most anterior point of the forehead between the eyebrows (glabella) to the back of the head (occiput).

14 Menton to tip of head. The vertical distance from the tip of the chin (menton) to the level of the top of the head, measured with a headboard.

15 Menton-criton length. The vertical distance from the bottom of the chin (menton) to the midpoint of the nostril (criton).

16 Menton-subnasale length. The distance from the bottom of the chin (menton) to the base of the most superior (subnasale).

The bigger the head, the bigger the star...[http://youtu.be/qnu\\_bkvumxU](http://youtu.be/qnu_bkvumxU)



sailer does gods work

<http://simplyoloni.com/the-hoe-stories-e...ing-about/>



chadimir Ultra Super Poster



Posts: 5,366  
Threads: 850  
Joined: Nov 2015  
Reputation: 780

Quote:

This is why I laugh when women try to say stuff like "yeah, sure I mean he looks great for a one night stand, but it isn't someone I'd want to get to know, he looks full of himself.. I'd rather be serious with the sweet average guy" - female coping to the max. She knows deep down slayers are too risky and don't stick around to worship her existence

bitch do you realize what you're saying? You're saying the average guy isn't good enough to sweep you up off your feet and whisk you away because you lack RAW ATTRACTION to him, so he has to resort to gimmicks like flowers and commitment to get access to your pussy that the slayer doesn't.

The only way women can ever be happy is with a man that is genetically superior to them and that has tons of options. They don't want some goofy whiteknight cuck, that shit dries them up quick, quick, quick. Women want to feel inferior to a man

- smellysocks





**PicsNotLoading** ●  
Senior Member



Posts: 385  
Threads: 62  
Joined: Nov 2015  
Reputation: **160**

**Chadimir Thunderscovsky Wrote:** →

(06-01-2016, 05:15 AM)

sailer does gods work



Find

Reply

« [Next Oldest](#) | [Next Newest](#) »

Enter Keywords

Search Thread

[Subscribe to this thread](#)

Forum Jump: -- [Looksmaxing](#)